

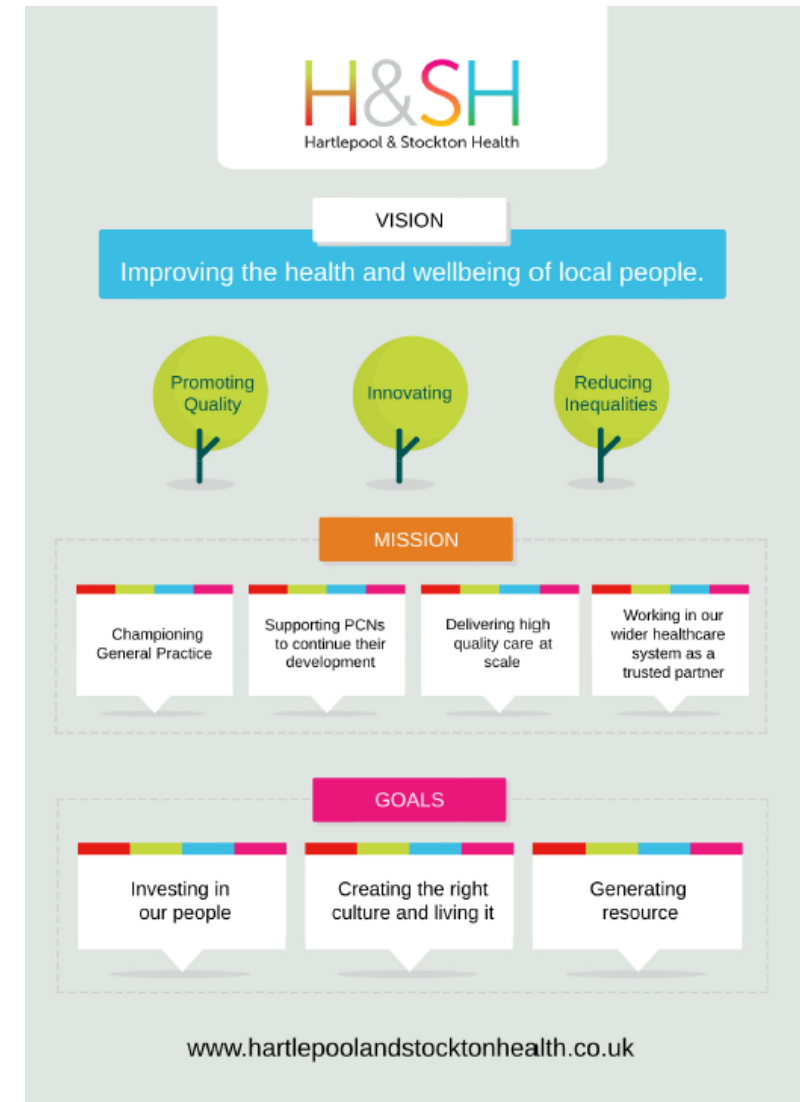
Stockton Local Authority
Scrutiny Committee
December 2023

Fiona Adamson, Chief Executive Officer
Carl Gowland, Head of Operations and
Service Delivery

- Who we are - structure and purpose
- Our services - overview
- 7Day Enhanced Access
- Our services - workforce
- Our services - supporting access
- Questions

Who we are – structure and purpose

- Federation formed in 2016
- Caring for 300,000 people
- Shareholder owned
- Every practice a member
- Governed by constitution
- 6 Board Directors, aligned to a specific area
- Roles elected bi-annually



Our services

- 7Day Enhanced Access to general practice (217.5 hours pw / >32,000 appointments p.a. across Stockton)
- Footsteps (Teen Health One Stop Shop)
- Integrated Urgent Care Service (365 / 24h / 2 sites) in partnership with North Tees & Hartlepool FT & North East Ambulance Service
- Covid Clinics and Oximetry@home
- Covid vaccination services
- Outreach nursing service (Public Health)
- Primary Care Network support services including teams of additional roles



7Day Enhanced Access – Locations

Norton Medical Centre

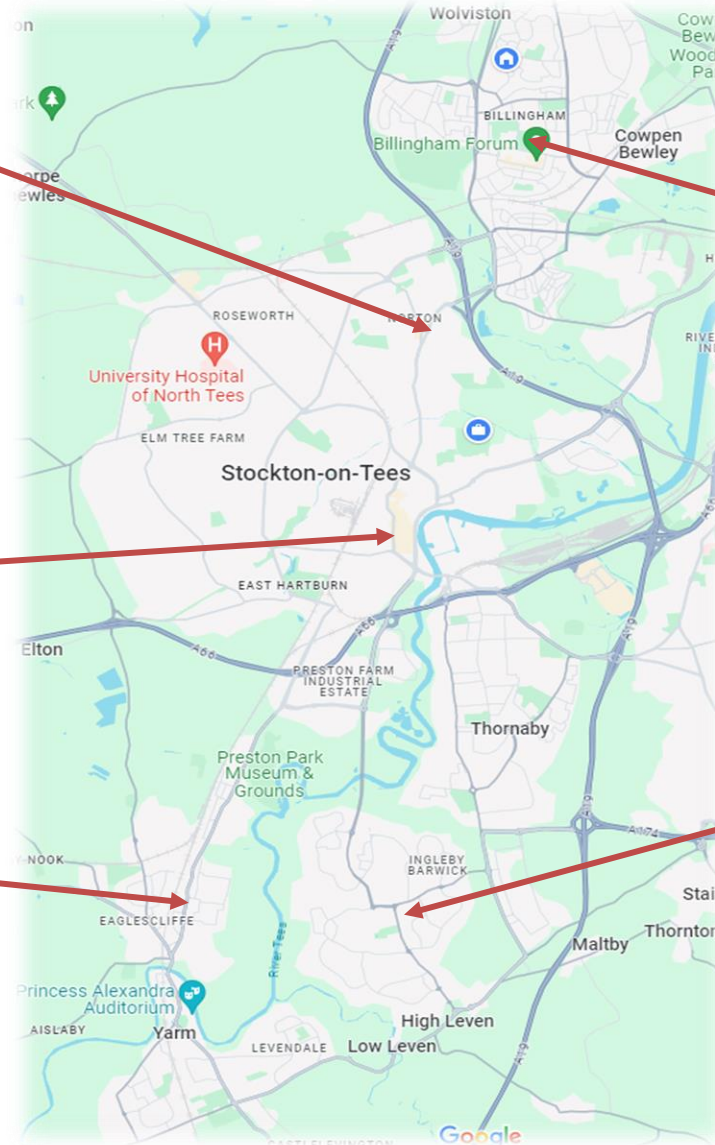
- Saturday - 09:00-17:00

Tennant Street Medical Practice

- Monday - Friday 18:30-21:00
- Saturday - 09:00-17:00

Eaglescliffe Medical Practice

- Sunday - 09:00-17:00



Abbey Health Centre

- Monday - Friday 18:30-21:00

Woodbridge Medical Practice

- Monday - Friday 18:30-21:00
- Saturday - 09:00-17:00

7Day Enhanced Access – typical month

Appointment type	Number of appointments	Number of DNAs
Asthma review	38	0
Vitamin B12	177	4
Complex treatment room	459	36
Diabetes review	51	0
Doppler assessment	37	5
Ear irrigation	55	4
Family planning	48	8
GP	1081	100
Menopause clinic	28	0
Nurse Practitioner	209	24
Phlebotomy	319	49
Physio	60	2
Smear clinic	206	20
Treatment room	628	54

Our services - workforce

- Digital staffing pool (bank of staff for practices)
- GP and Nurse Fellowships (career start schemes)
- GP Retention scheme (RISE)
- Primary Care Network teams
- Primary Care Training Hub
- Delivery of healthcare apprenticeships



Our services – supporting access

- Digital staffing pool (bank of staff)
- OPEL framework / Tees Valley group
- Winter support (>800 appointments in Stockton)
- Acute Respiratory Infection hubs (>700 appointments in Stockton)
- Bank Holiday / Sunday support



Questions